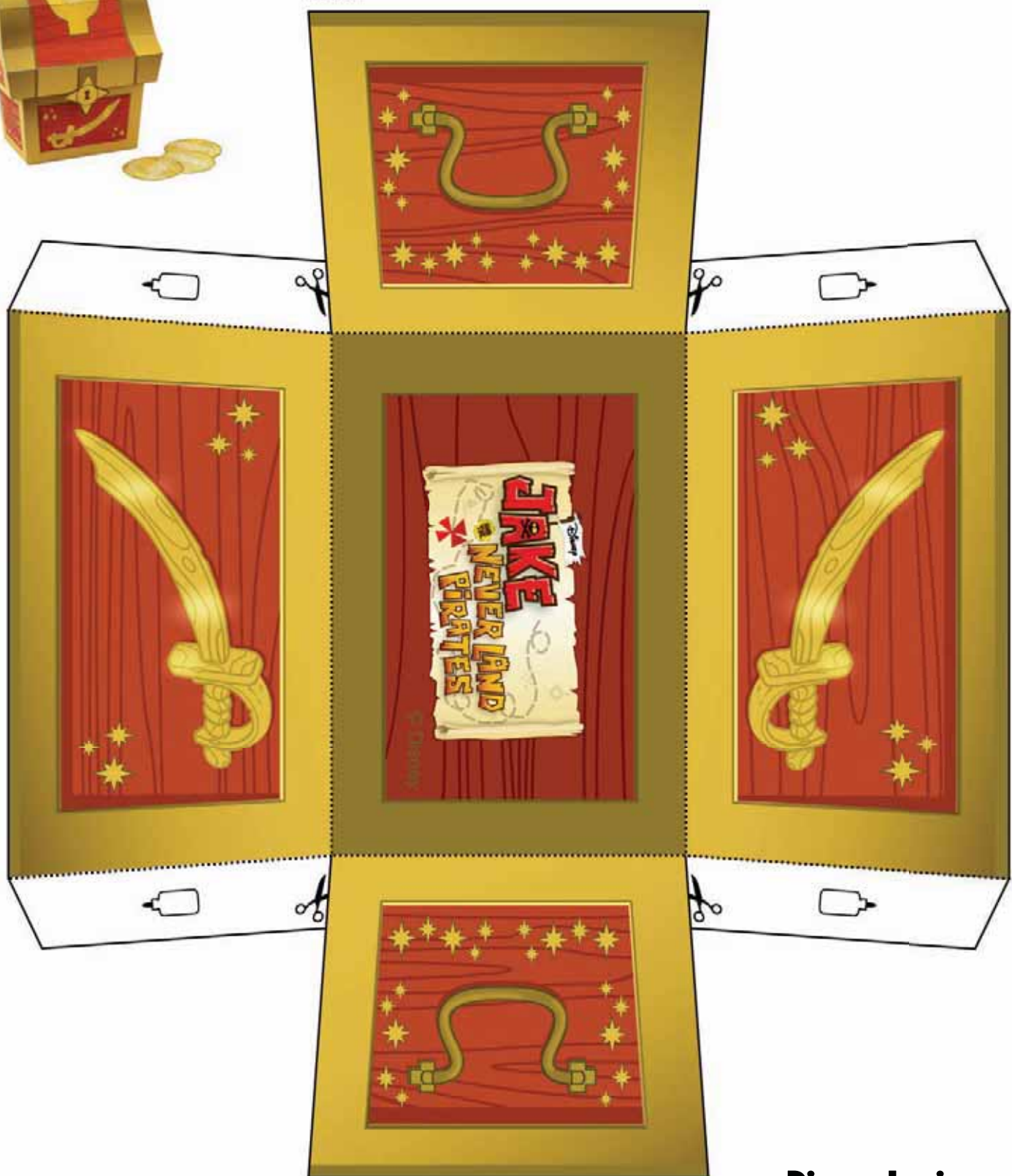




TREASURE CHEST



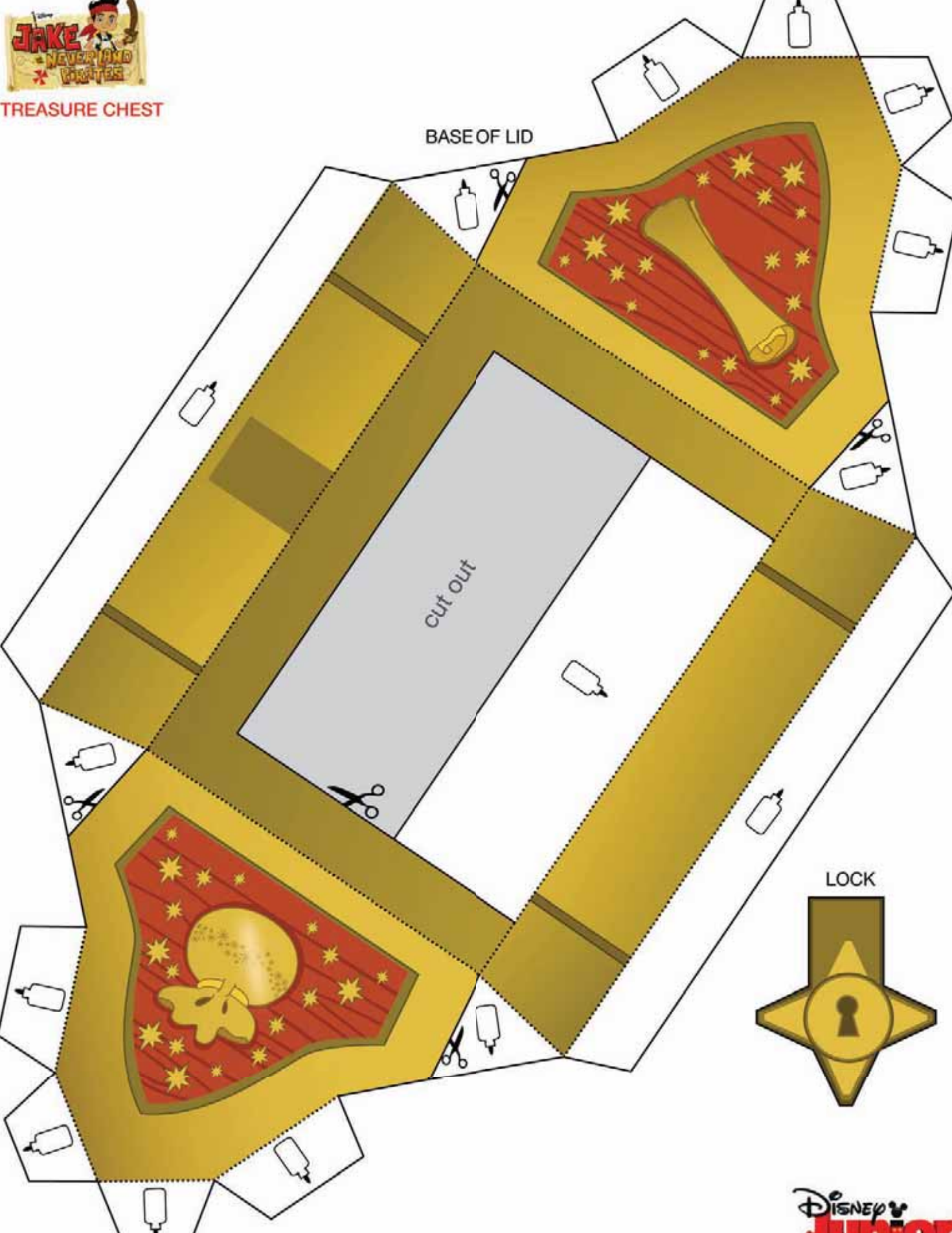
BASE





TREASURE CHEST

BASE OF LID

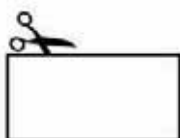
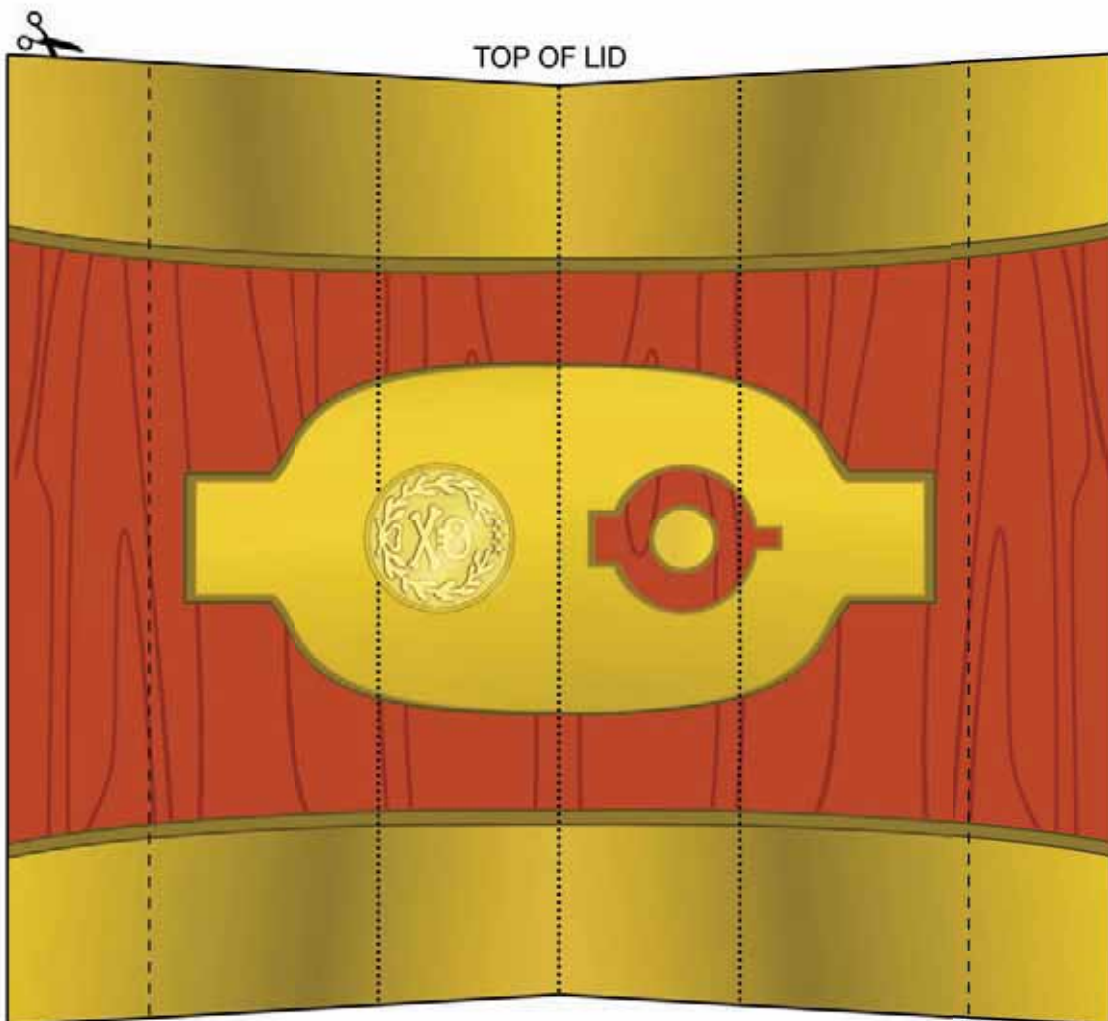


LOCK





TREASURE CHEST



**NOTE:** Only cut out along the outer solid line of doubloons.

DOUBLOONS





# Instructions

Cutting and scoring intended for grown-ups only.

## TREASURE CHEST

### MATERIALS:

- Metal-edged ruler
- Butter knife
- Scissors or craft knife
- Cutting mat (optional)
- Non-toxic multipurpose glue

1. Score along all the dotted and dashed lines.



2. Cut along all the solid lines.



3. Use the mountain fold on dotted lines, and use the valley fold on dashed lines.

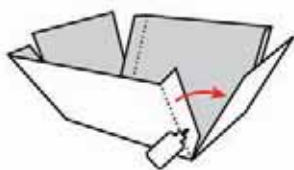


mountain fold

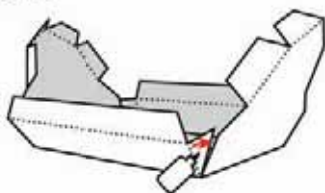


valley fold

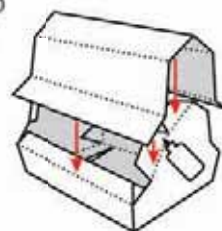
4. *Create the base:* Apply glue to the four tabs and fold in place.



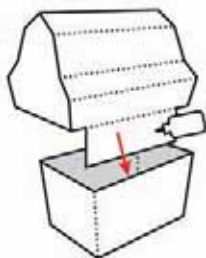
5. *Create the lid:* Apply glue to the four tabs at the base of the lid and fold in place.



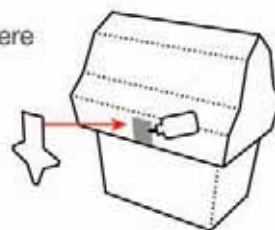
6. Apply glue to the remaining tabs and secure the top of the lid in place.



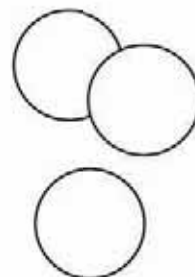
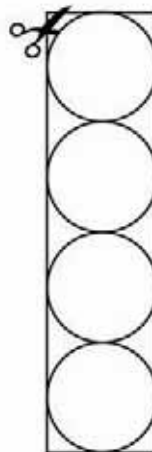
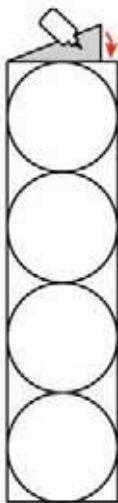
7. Attach the lid by gluing the hinge to the inside edge at the back of the base.



8. Glue the lock to the lid where indicated on front.



9. *Create the doubloons:* Fold and glue together. Allow to dry, and then cut along circles. You're done!



TREASURE CHEST 11x17

LOCK



**NOTE:** Only cut out along the outer solid line of doubloons.



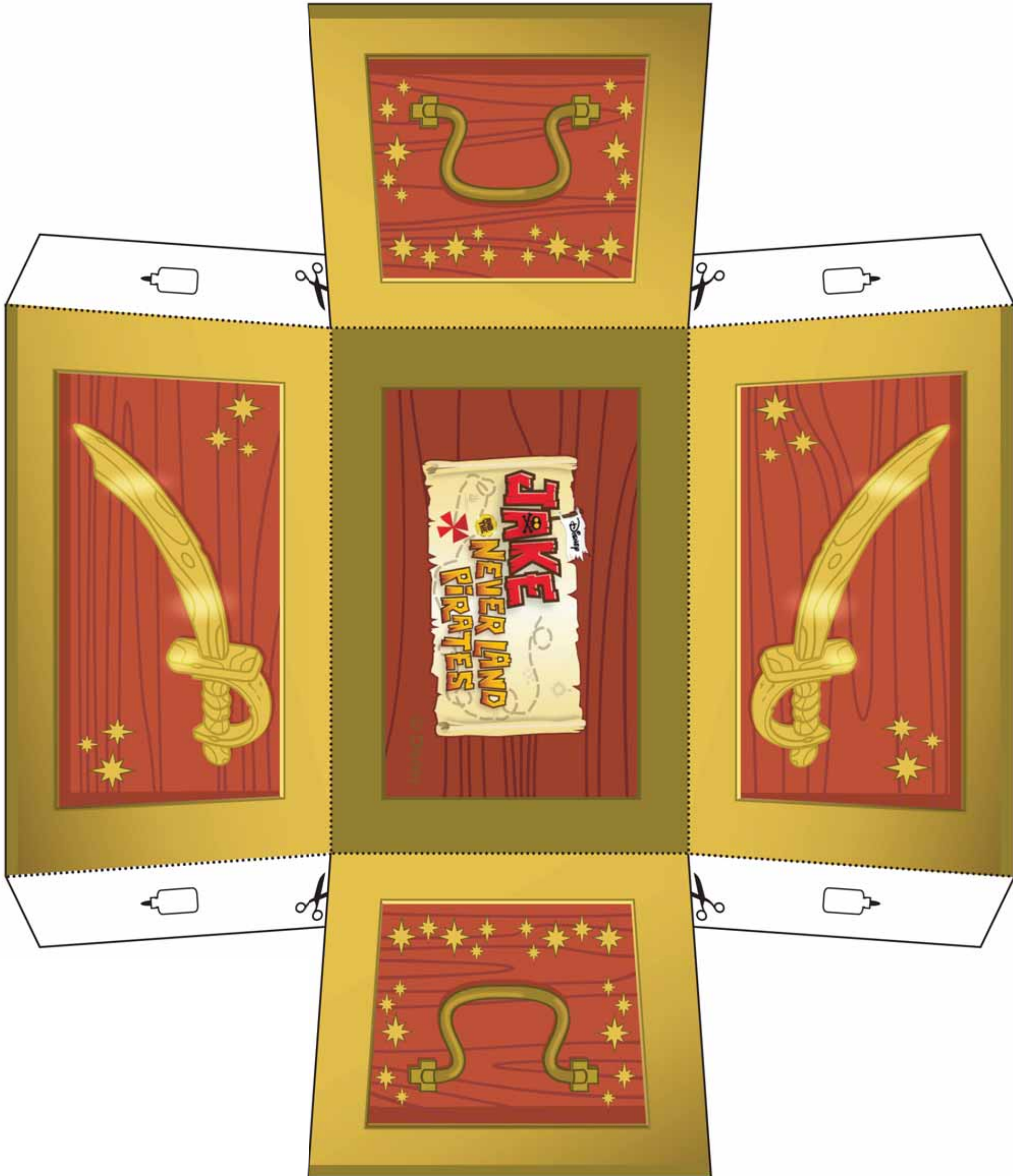
DOUBLOONS



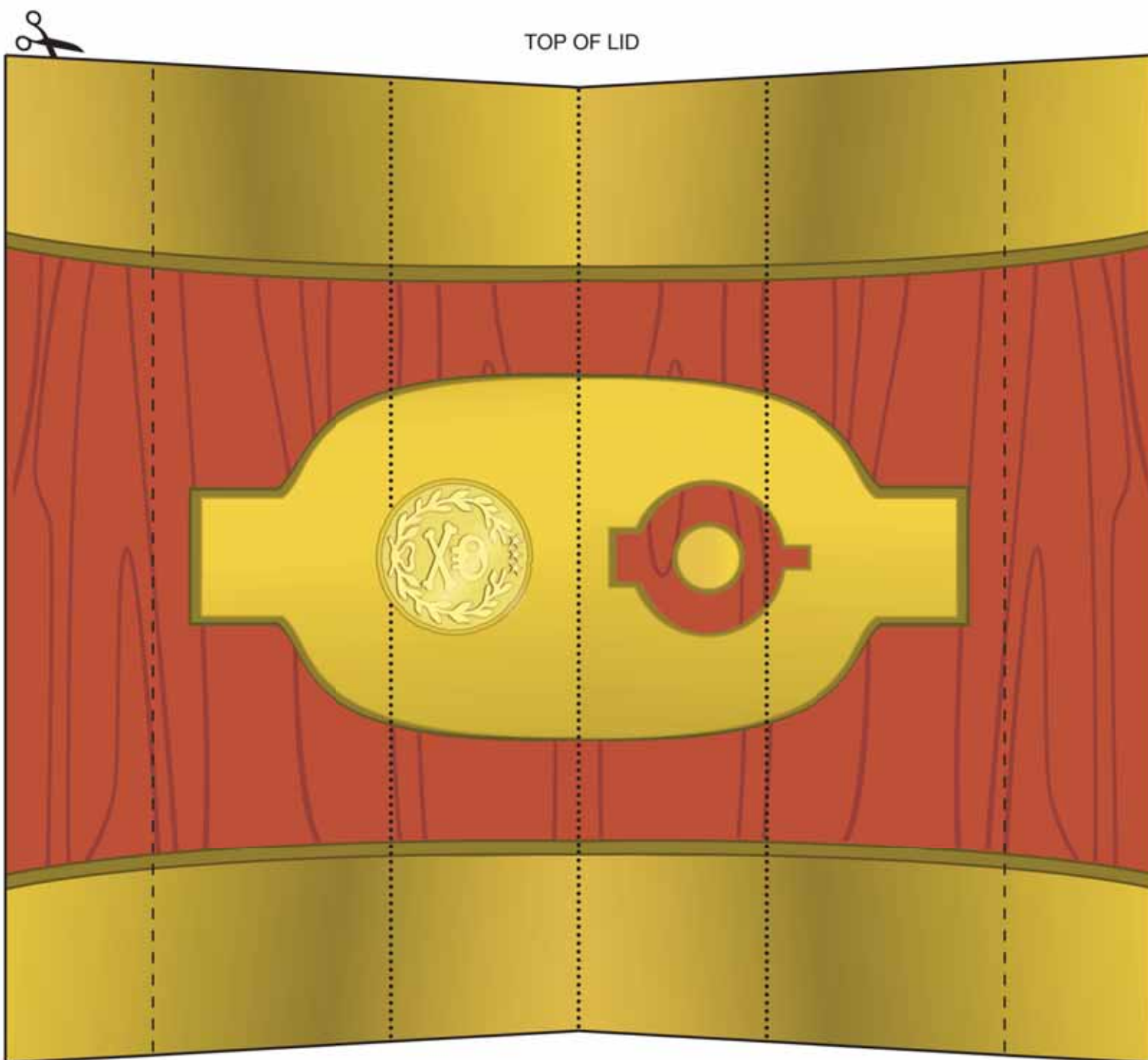


TREASURE CHEST 11x17

BASE

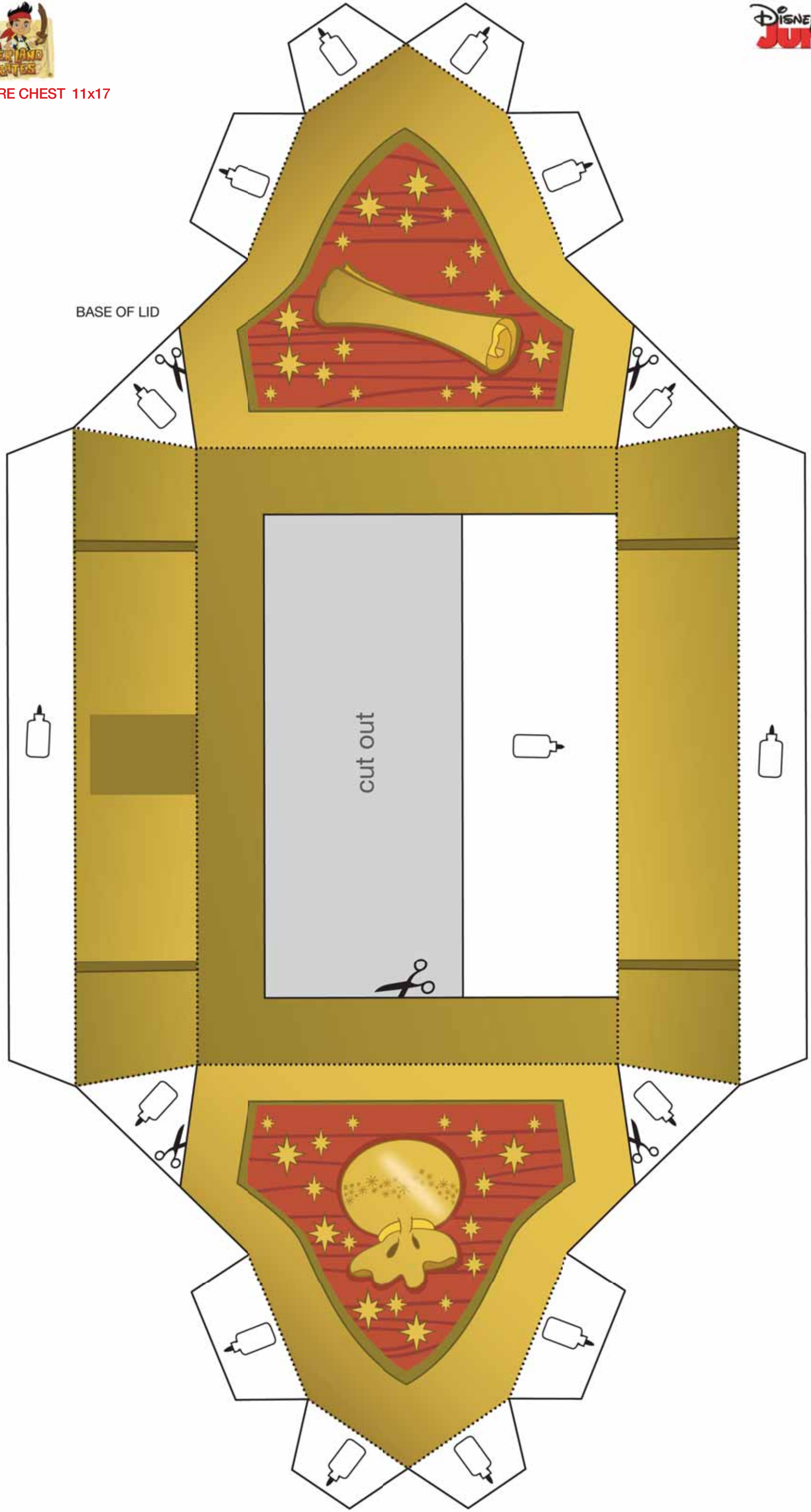


TREASURE CHEST 11x17





TREASURE CHEST 11x17



BASE OF LID

cut out



# Instructions

Cutting and scoring intended for grown-ups only.

**TREASURE CHEST 11x17**

## MATERIALS:

- Metal-edged ruler
- Butter knife
- Scissors or craft knife
- Cutting mat (optional)
- Non-toxic multipurpose glue

1. Score along all the dotted and dashed lines.



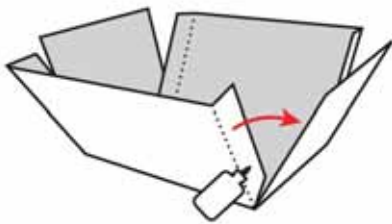
2. Cut along all the solid lines.



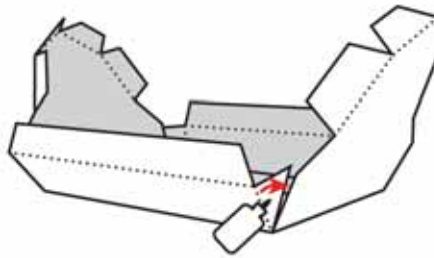
3. Use the mountain fold on dotted lines, and use the valley fold on dashed lines.



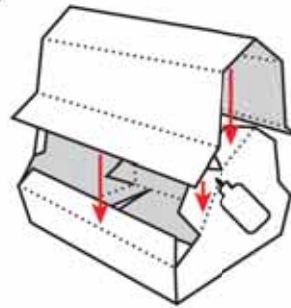
4. *Create the base:* Apply glue to the four tabs and fold in place.



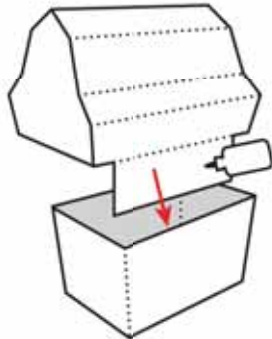
5. *Create the lid:* Apply glue to the four tabs at the base of the lid and fold in place.



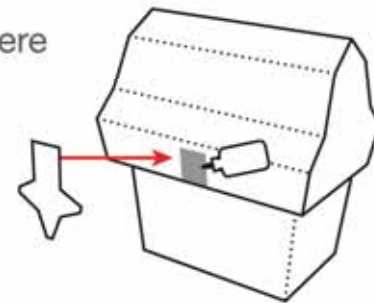
6. Apply glue to the remaining tabs and secure the top of the lid in place.



7. Attach the lid by gluing the hinge to the inside edge at the back of the base.



8. Glue the lock to the lid where indicated on front.



9. *Create the doubloons:* Fold and glue together. Allow to dry, and then cut along circles. You're done!

