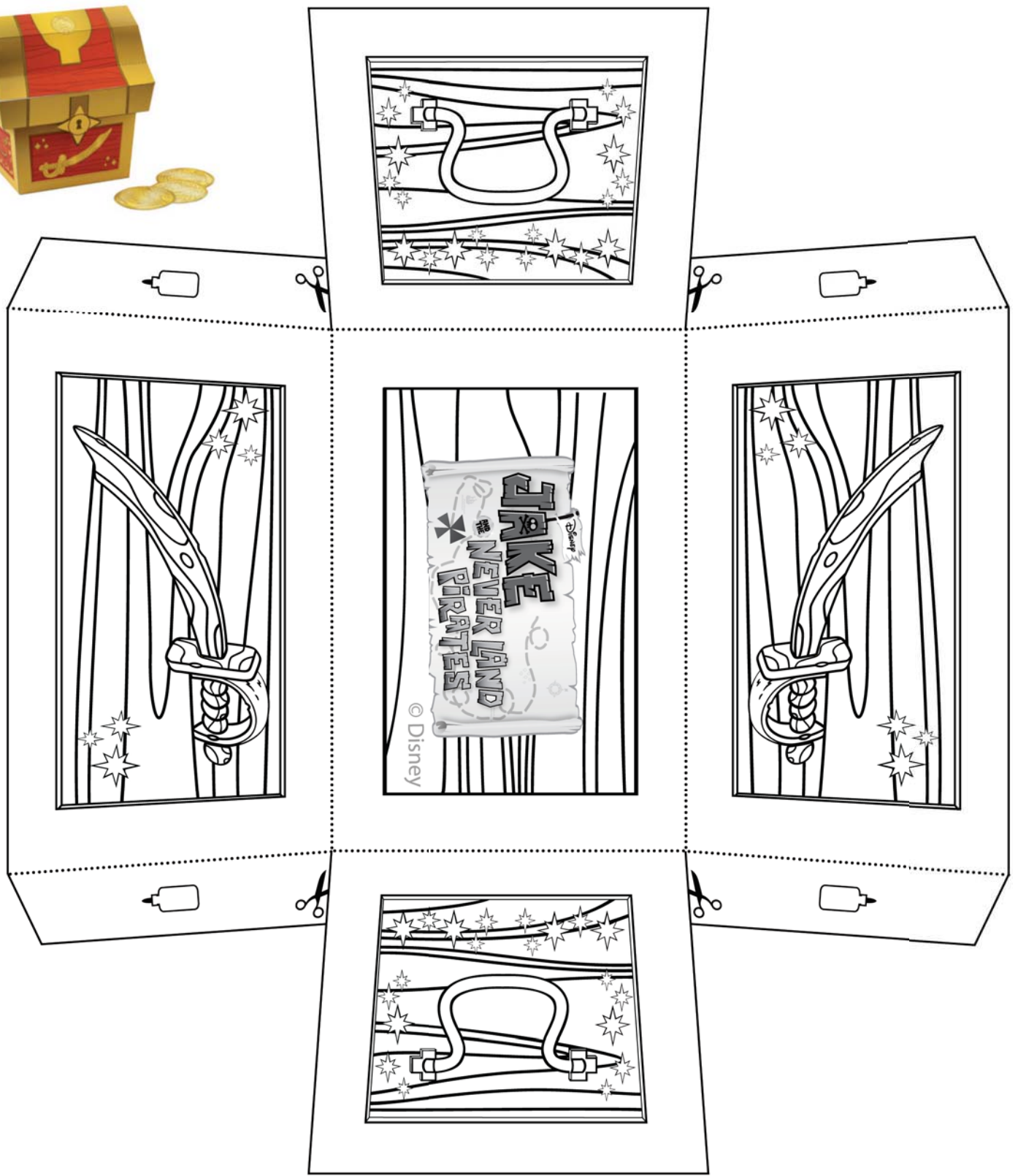




TREASURE CHEST



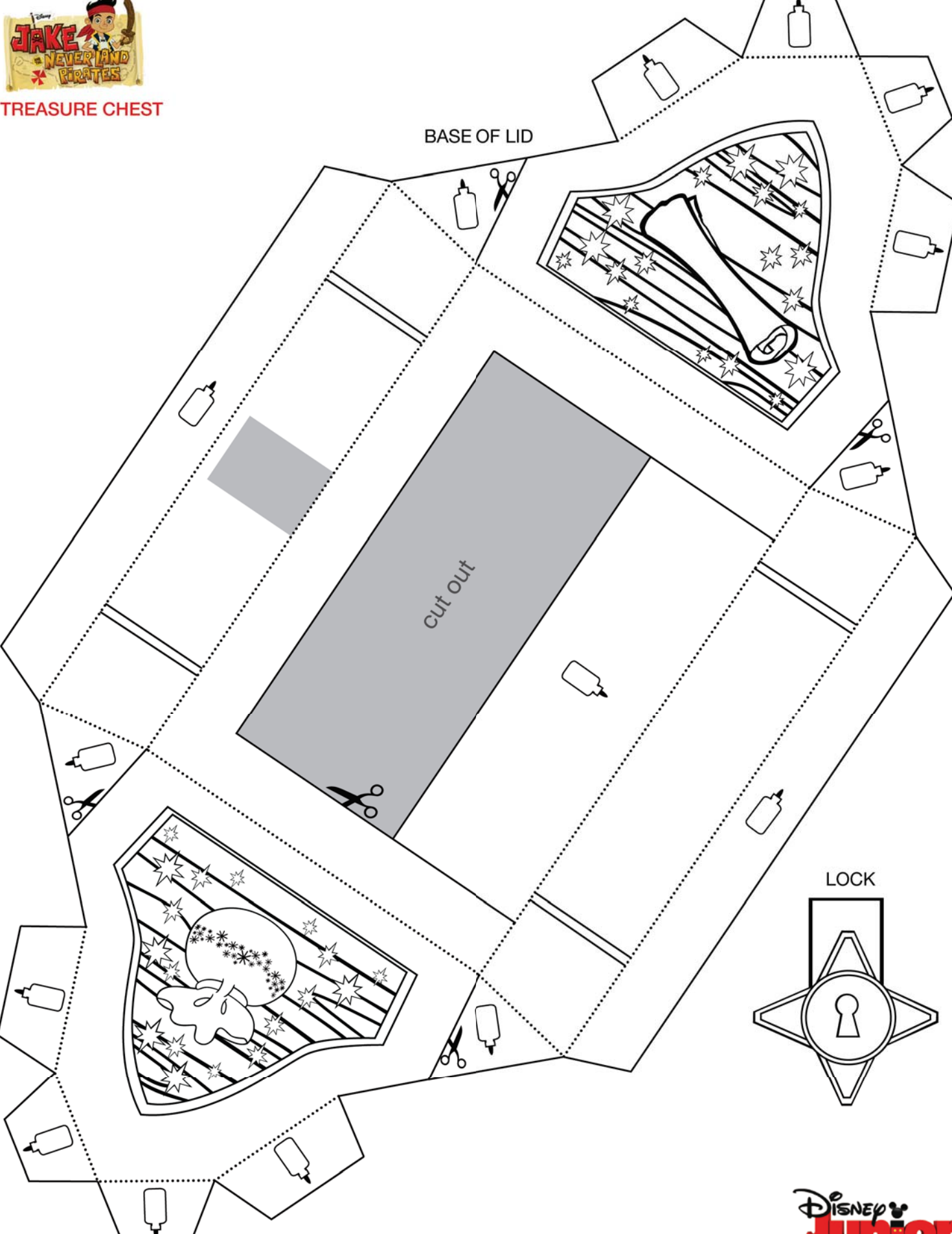
BASE





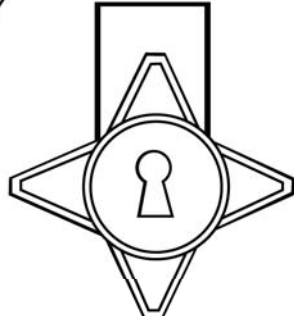
TREASURE CHEST

BASE OF LID



cut out

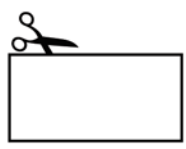
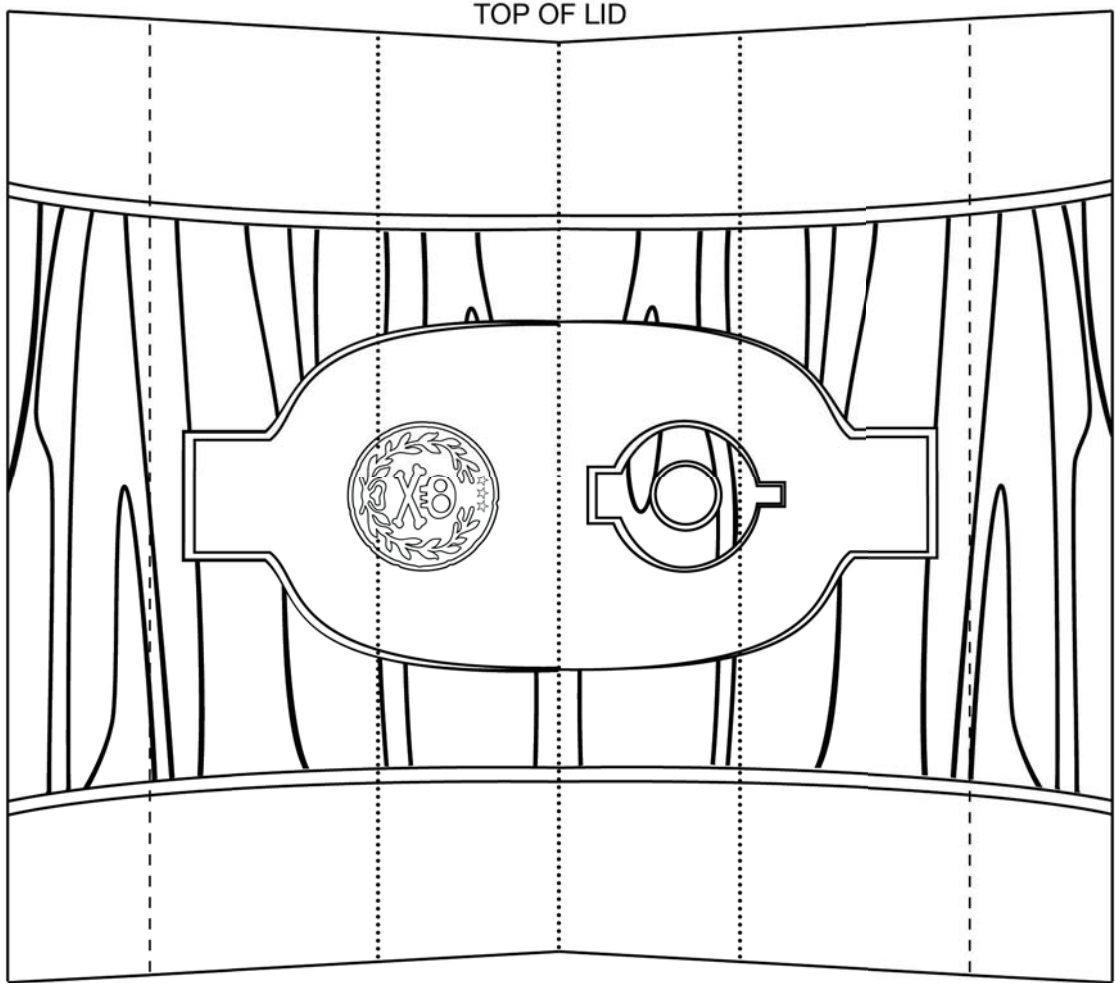
LOCK





TREASURE CHEST

TOP OF LID



NOTE: Only cut out along the outer solid line of doubloons.

DOUBLOONS





Instructions

Cutting and scoring intended for grown-ups only.

TREASURE CHEST

MATERIALS:

- Metal-edged ruler
- Butter knife
- Scissors or craft knife
- Cutting mat (optional)
- Non-toxic multipurpose glue

1. Score along all the dotted and dashed lines.



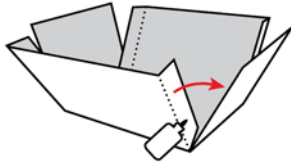
2. Cut along all the solid lines.



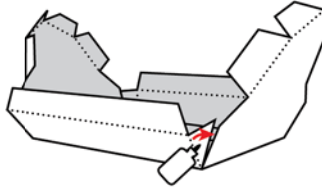
3. Use the mountain fold on dotted lines, and use the valley fold on dashed lines.



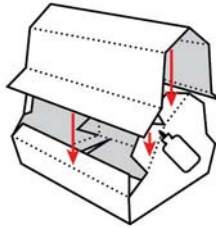
4. *Create the base:* Apply glue to the four tabs and fold in place.



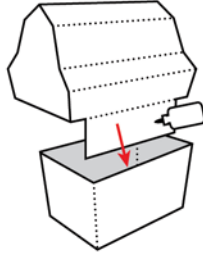
5. *Create the lid:* Apply glue to the four tabs at the base of the lid and fold in place.



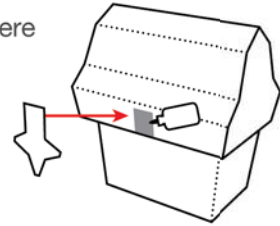
6. Apply glue to the remaining tabs and secure the top of the lid in place.



7. Attach the lid by gluing the hinge to the inside edge at the back of the base.



8. Glue the lock to the lid where indicated on front.



9. *Create the doubloons:* Fold and glue together. Allow to dry, and then cut along circles. You're done!

